



Acti-Bush Ltd

Special points of interest:

- Information on our Company
- Bushes, Pin Seals, Shims and Tags
- Hardened Pins
- Pin Templates
- Contact Us

Inside this Booklet:

Our products	2
Pins	3-4
Pin Drawings	5-29

Acti-Bush Ltd—About Us

Acti-Bush was founded when Active Engineering Ltd found it difficult to source original replacement parts to repair earthmoving machinery. We also found many imported after market parts to be of poor quality resulting in premature failure.

While making our own bushes was easy to do, the time required to properly heat treat and harden the parts meant that it was not possible to offer a same day repair service.

To ensure good stocks of hardened bushes we started to produce our own range of common sizes that gradually grew to cover almost every type of machine. Demand from other machinery repair companies saw Acti-Bush established as an independent company in 2005.

Acti-Bush now supply bushes, pin seals, shims, pins and tags to many companies throughout New Zealand and the Pacific with a reputation for being the longest lasting repair part, which has made us the first choice for those who want long term reliability from their machinery.

Our ex stock range of pins and bushes is always expanding and our special relationship with the heat treatment facility means that custom made one off bushes can be manufactured and hardened in very short time frames.

Contact Us

Opening Hours: 7.30 — 4:30

Phone: 09 475 9816

Fax: 09 478 8447

Email: info@actibush.co.nz

www.actibush.co.nz



Bushes



Acti-Bush Shim

5000 bushes in stock in over 120 sizes.

Acti-Bush Bushes are 100% NZ Made from quality steel and hardened to ensure trouble free operation. All bushes are then passivated with a gold/silver coating reducing corrosion to give a longer life and easier replacement.

Your size not there? Our Workshop is able to manufacture bushes to your requirements or in a number of cases modify an existing stock bush to your size the same day.
Contact us on 09 475 9816.

Shims and Tags

Acti-Bush Shims are made from low carbon steel to support, adjust for better fit or provide a level surface.

Check our stock tags and sizes to save cost and reduce manufacturing time. Alternatively we are able to manufacture tags as per your request.

Pin Seals



Acti-Bush Pin Seal

All Seals are made with Neoprene, a synthetic material composed of rubber. Together with a metal exterior, our seals offer optimal strength, flexibility and accurate, easy installation.

Acti-Bush Ltd

19 Parkway Drive
Mairangi Bay
Auckland

09 475 9816
09 478 8447
info@actibush.co.nz
www.actibush.co.nz

“Our fast delivery is able to be provided by Acti-Bush holding a large stock of pre-hardened bar onsite, plain and pre-drilled with bolt locating holes.”

Hardened Pins

High tensile core strength together with hardened steel outer surface gives you one of the toughest, hardest pins on the market, superior to most OEM products. Customer proven to last 2-3 times longer. Made from high tensile centreless ground steel stock, pins are cut to length then chamfered, drilled and tapped to your specifications.

We are able to offer the best lead times within the industry and deliver products direct to site with a full track and trace service.

We hold a large stock of pre-hardened bar onsite, plain and pre-drilled with bolt locating holes. We can add tags, greaseways and counterbores usually within 24 hours and in most cases can be finished to your requirements same day for same day dispatch.

Odd sizes or more specialised pins often require manufacturing from non-hardened stock. Our relationship with the heat treating plant ensures your pins are made with priority, allowing us to provide your pin between 3 -5 working days ex factory.





Need a Pin?

“Have a look at our website www.actibush.co.nz for 110 different pin drawings.”

By the time you order the material, machine the pin, send it away for heat treating and get it back in your workshop—one week?

We have a large stock of 4140 steel already heat treated (induction hardened) in 25mm, 30mm, 35mm, 40mm, 45mm, 50mm, 55mm, 60mm, 65mm, 70mm, 71mm, 80mm, 85mm, 90mm, 95mm, and 110mm. Together with 1”, 1.25”, 1.5”, 1.75”, 2”, 2.25”, 2.5”, and 3”. Some stock have pre-drilled bolt locating holes.

This allows us to cut off and finish a plain pin and if you order before 1pm. in most cases, we can supply simple hardened steel pins by same day dispatch!

Cost effective—avoid the steel delivery cost, minimum heat treating cost and couriers back and forth.

Pins with greaseways can usually be machined same day but please allow up to an additional day for machining.

Have a look at our website www.actibush.co.nz—we have 110 drawings of our most requested pins online. Print them out and fax to us for a price and delivery time

Provided in this booklet are pin drawings of the most common pins and some sample prices. Fax us with your measurements for a price and estimated delivery time.

Acti-Bush Ltd

19 Parkway Drive
Mairangi Bay
Auckland

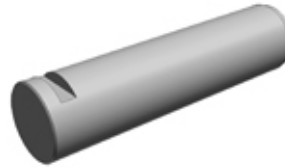
09 475 9816
09 478 8447
info@actibush.co.nz
www.actibush.co.nz

Tag Information



Round Flange:

Flange and pin are manufactured from one piece of steel



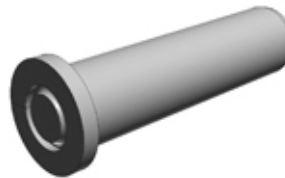
Locking Plate Slot:

For bolted locking plate to drop into groove to retain pin



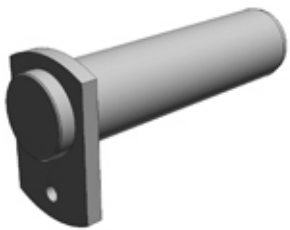
Round Slide on Tag:

Round tag made separately and welded into position



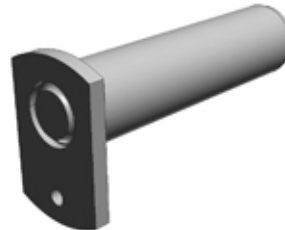
Round Prepped Tag:

Round tag made separately and welded flush



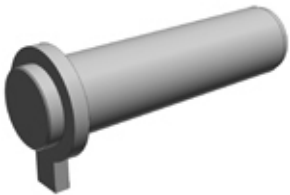
Rectangular Slide On Tag:

Rectangular tag made separately and welded into position



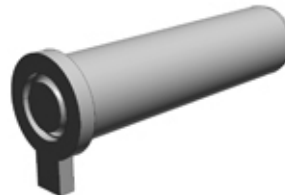
Rectangular Prepped Tag:

Rectangular tag made separately and welded flush



Keyhole Slide On Tag:

Keyhole shaped tag made separately and welded into position



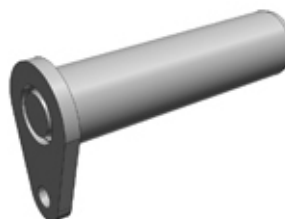
Keyhole Prepped Tag:

Keyhole shaped tag made separately and welded flush



Teardrop Slide On Tag:

Teardrop shaped tag made separately and welded into position



Teardrop Prepped Tag:

Teardrop shaped tag made separately and welded flush

Enclosed Pin Drawings

Page	Code	Description
7	N	Hardened plain Pin
8	NG	Hardened pin with no bolt hole and one greaseway
9	NGC	Hardened pin with no bolt hole and one counterbored greaseway
10	NGGC	Hardened pin with no bolt hole and two counterbored greaseway
11	NB	Hardened pin with bolt hole
12	NBG	Hardened pin with bolt hole and one greaseway
13	NBGC	Hardened pin with bolt hole and one counterbored greaseway
14	NBGGC	Hardened pin with bolt hole and two counterbored greaseway
15	OS	Round Slide on Tag hardened pin
16	OSG	Round Slide on Tag hardened pin with no bolt hole and one greaseway
17	OSGC	Round Slide on Tag hardened pin with no bolt hole and one counterbored greaseway
18	OSGGC	Round Slide on Tag hardened pin with no bolt hole and two counterbored greaseway
19	OSB	Round Slide on Tag hardened pin with bolt hole
20	OSBG	Round Slide on Tag hardened pin with bolt hole and one greaseway
21	OSBGC	Round Slide on Tag hardened pin with bolt hole and one counterbored greaseway
22	OSBGGC	Round Slide on Tag hardened pin with bolt hole and two counterbored greaseway
23	RS	Rectangular Slide on Tag hardened pin
24	RSG	Rectangular Slide on Tag hardened pin with no bolt hole and one greaseway
25	RSGC	Rectangular Slide on Tag hardened pin with no bolt hole and one counterbored greaseway
26	RSGGC	Rectangular Slide on Tag hardened pin with no bolt hole and two counterbored greaseway
27	RSB	Rectangular Slide on Tag hardened pin with bolt hole
28	RSBG	Rectangular Slide on Tag hardened pin with bolt hole and one greaseway
29	RSBGC	Rectangular Slide on Tag hardened pin with bolt hole and one counterbored greaseway
30	RSBGGC	Rectangular Slide on Tag plain pin with bolt hole and two counterbored greaseway

Acti-Bush Ltd

19 Parkway Drive
Mairangi Bay
Auckland

09 475 9816
09 478 8447

info@actibush.co.nz
www.actibush.co.nz

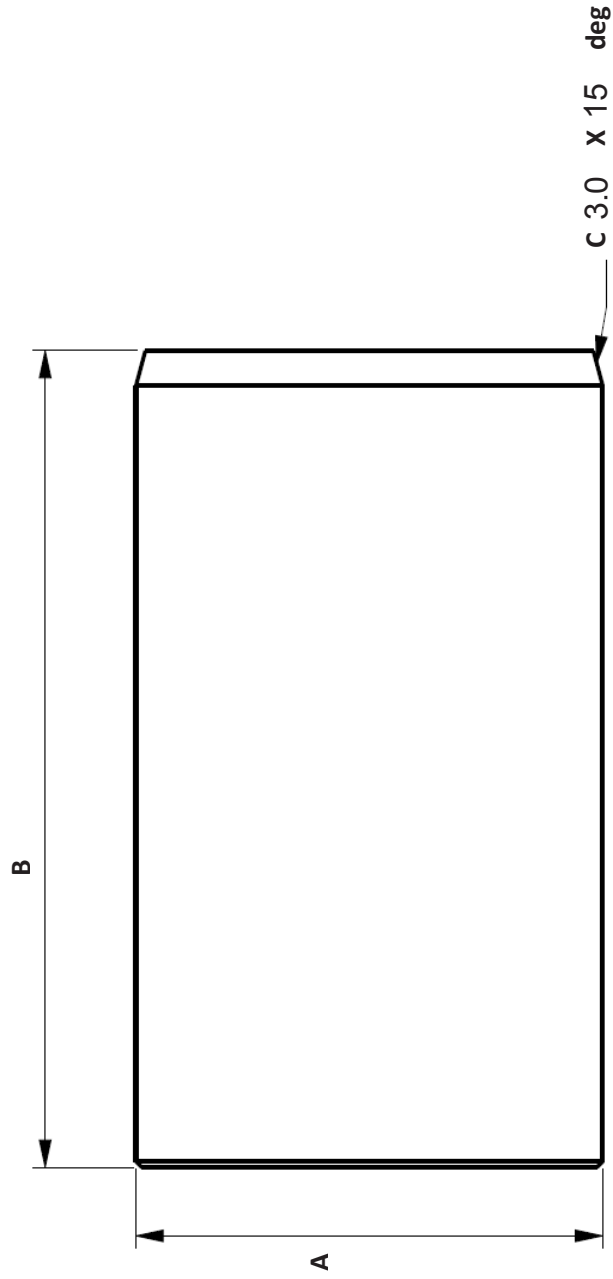
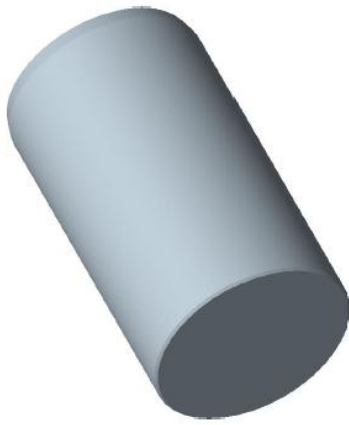
Email: sales@actibush.co.nz

Phone: 09 475 9816

Fax: 09 478 8447



ActiBush



Drawing Code: N	Quantity Required:	
Machine Make/Model:	Customer Order Number:	
Induction Harden:	Customer:	
Other:	Job Number:	

Pin Standard
Leading edge – 3mm x 15° (default unless defined above)
Greaseway – 5mm
Counterbore – 1/8 BSP
Undercut for recessed grease nipple – 2.1mm

	Dimension
A	Diameter
B	Length
C	Leading Edge
D	Leading end of pin to hole centre
E	End of pin to hole center
F	Hole diameter
G	Greaseway length (end of pin to hole centre)
J	End of pin to first outlet
K	First outlet to second outlet

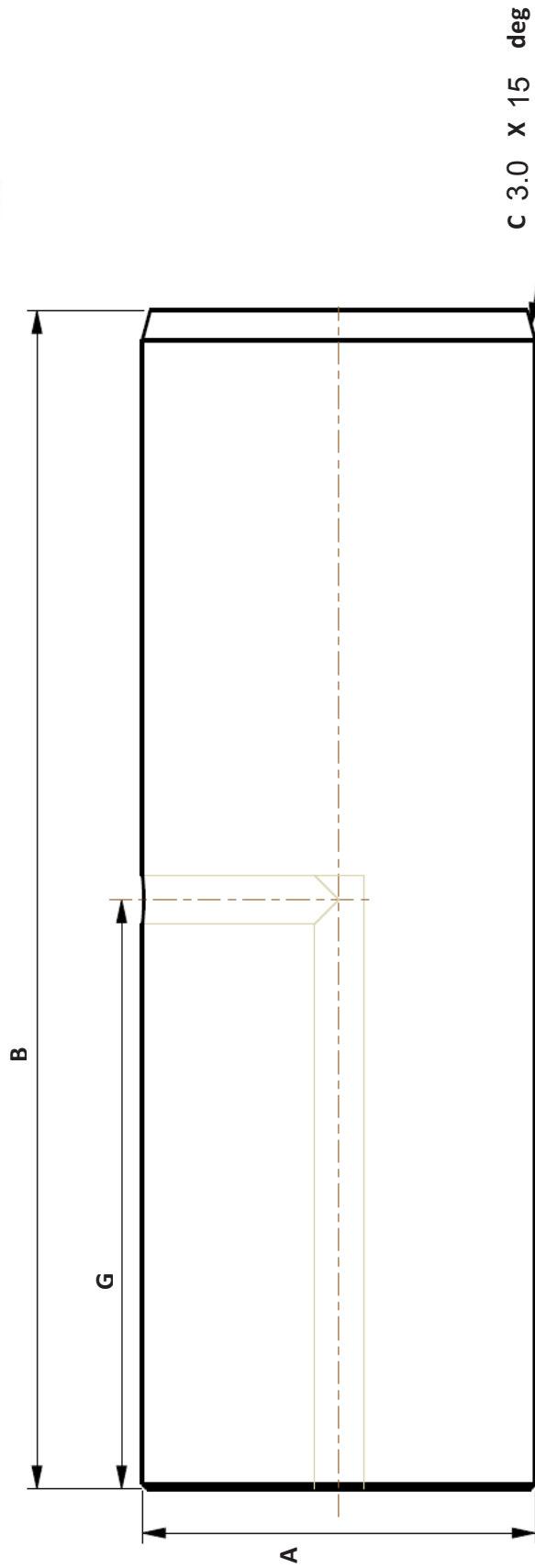
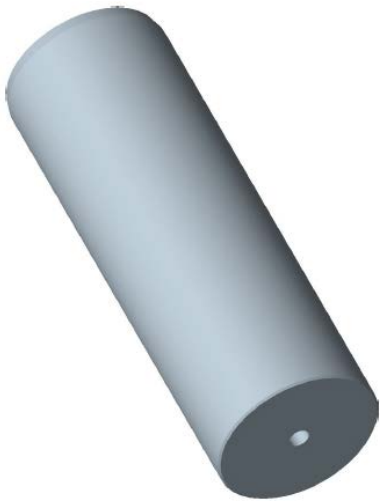
Email: sales@actibush.co.nz

Phone: 09 475 9816

Fax: 09 478 8447



ActiBUSH



Dimension	
A	Diameter
B	Length
C	Leading Edge
D	Leading end of pin to hole centre
E	End of pin to hole center
F	Hole diameter
G	Greaseway length (end of pin to hole centre)
J	End of pin to first outlet
K	First outlet to second outlet

Pin Standard	
Leading edge – 3mm x 15° (default unless defined above)	
Greaseway – 5mm	
Counterbore – 1/8 BSP	
Undercut for recessed grease nipple – 2.1mm	

Drawing Code:	NG	Quantity Required:	
Machine Make/Model:		Customer Order Number:	
Induction Harden:	<input type="checkbox"/>	Customer:	
Other:		Job Number:	

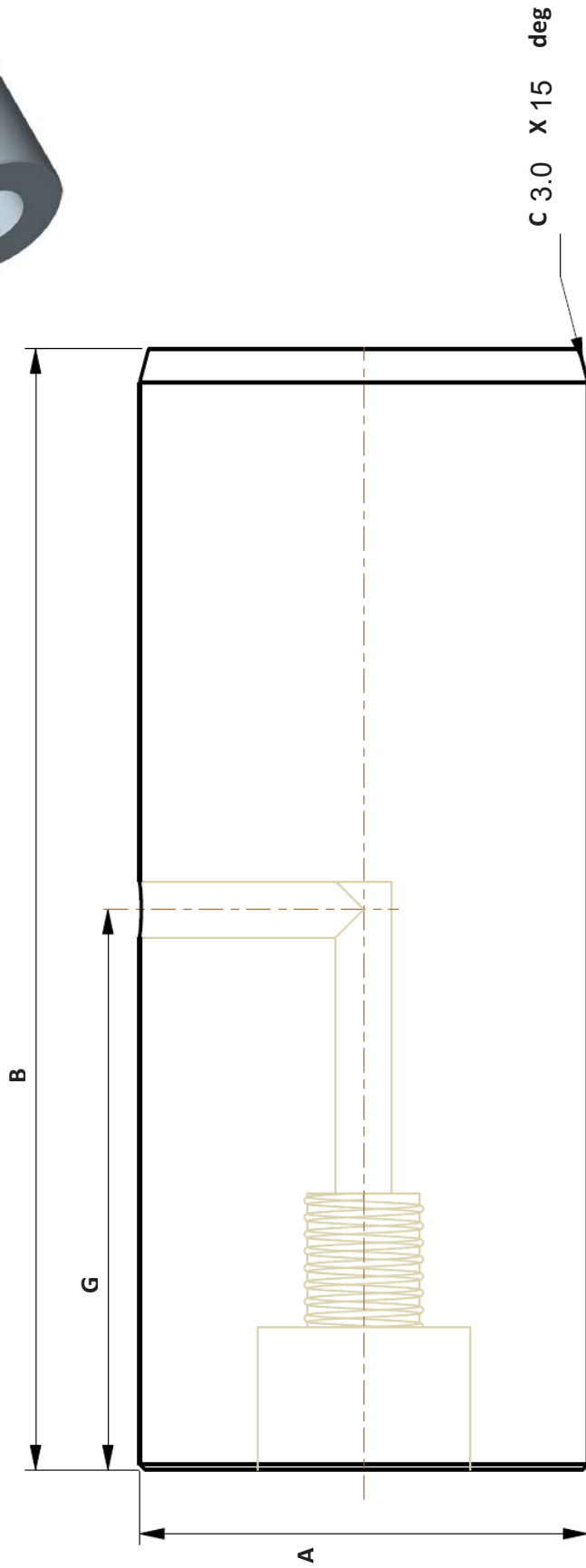
Email: sales@actibush.co.nz

Phone: 09 475 9816

Fax: 09 478 8447



ActiBUSH



Dimension	
A	Diameter
B	Length
C	Leading Edge
D	Leading end of pin to hole centre
E	End of pin to hole center
F	Hole diameter
G	Greaseway length (end of pin to hole centre)
J	End of pin to first outlet
K	First outlet to second outlet

Pin Standard
Leading edge – 3mm x 15° (default unless defined above)
Greaseway – 5mm
Counter-bore – 1/8 BSP
Undercut for recessed grease nipple – 2.1mm

Drawing Code:	NGC	Quantity Required:	
Machine Make/Model:		Customer Order Number:	
Induction Harden:	<input type="checkbox"/>	Customer:	
Other:		Job Number:	

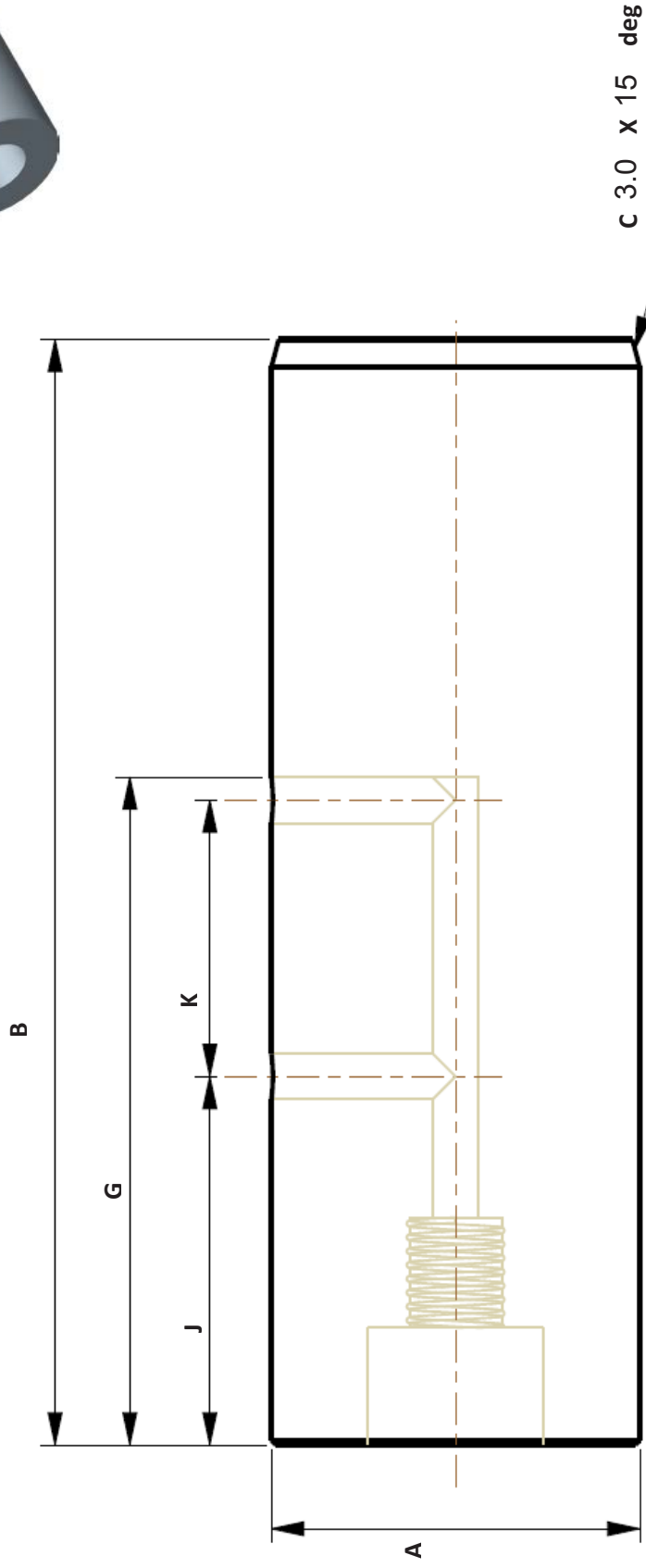
0 Email: sales@actibush.co.nz

Phone: 09 475 9816

Fax: 09 478 8447



ActiBUSH



Dimension	
A	Diameter
B	Length
C	Leading Edge
D	Leading end of pin to hole centre
E	End of pin to hole center
F	Hole diameter
G	Greaseway length (end of pin to hole centre)
J	End of pin to first outlet
K	First outlet to second outlet

Pin Standard	
Leading edge – 3mm x 15° (default unless defined above)	
Greaseway – 5mm	
Counter-bore – 1/8 BSP	
Undercut for recessed grease nipple – 2.1mm	

Drawing Code:	NGGC	Quantity Required:	
Machine Make/Model:		Customer Order Number:	
Induction Harden:	<input type="checkbox"/>	Customer:	
Other:		Job Number:	

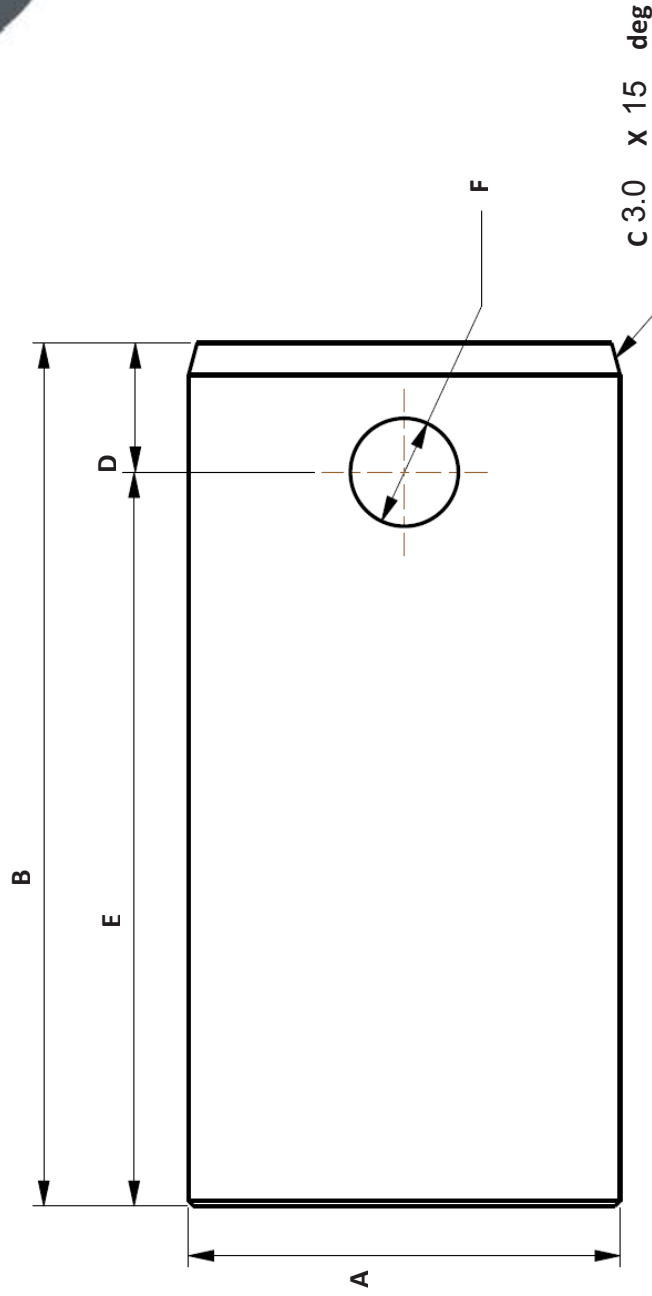
Email: sales@actibush.co.nz

Phone: 09 475 9816

Fax: 09 478 8447



ActiBush



Dimension	
A	Diameter
B	Length
C	Leading Edge
D	Leading end of pin to hole centre
E	End of pin to hole center
F	Hole diameter
G	Greaseway length (end of pin to hole centre)
J	End of pin to first outlet
K	First outlet to second outlet

Pin Standard	
Leading edge – 3mm x 15° (default unless defined above)	
Greaseway – 5mm	
Counterbore – 1/8 BSP	
Undercut for recessed grease nipple – 21mm	

Drawing Code: NB	Quantity Required:	
Machine Make/Model:	Customer Order Number:	
Induction Harden:	Customer:	
Other:	Job Number:	

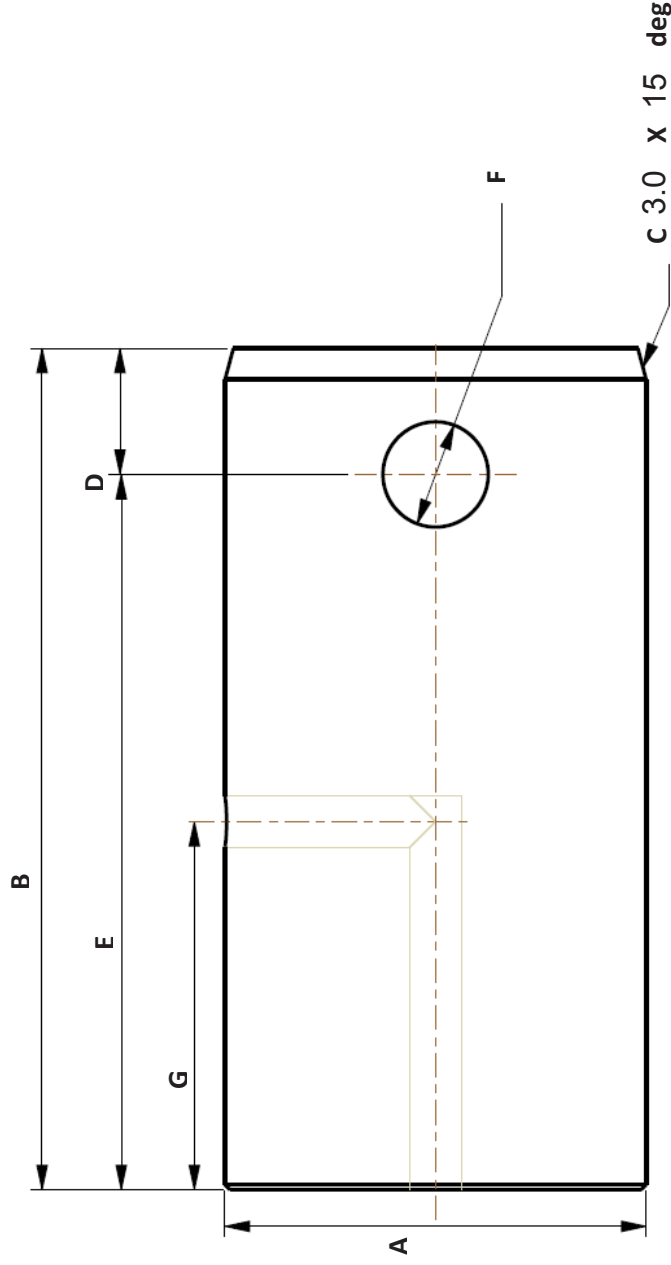
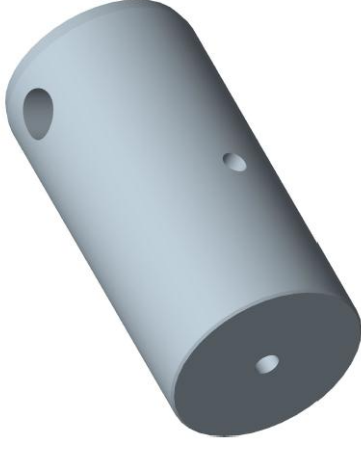
Email: sales@actibush.co.nz

Phone: 09 475 9816

Fax: 09 478 8447



ActiBush



Dimension	
A	Diameter
B	Length
C	Leading Edge
D	Leading end of pin to hole centre
E	End of pin to hole center
F	Hole diameter
G	Greaseway length (end of pin to hole centre)
J	End of pin to first outlet
K	First outlet to second outlet

Pin Standard	
Leading edge – 3mm x 15° (default unless defined above)	
Greaseway – 5mm	
Counterbore – 1/8 BSP	
Undercut for recessed grease nipple – 2.1mm	

Drawing Code: NBG	Quantity Required:	
Machine Make/Model:	Customer Order Number:	
Induction Harden:	Customer:	
Other:	Job Number:	

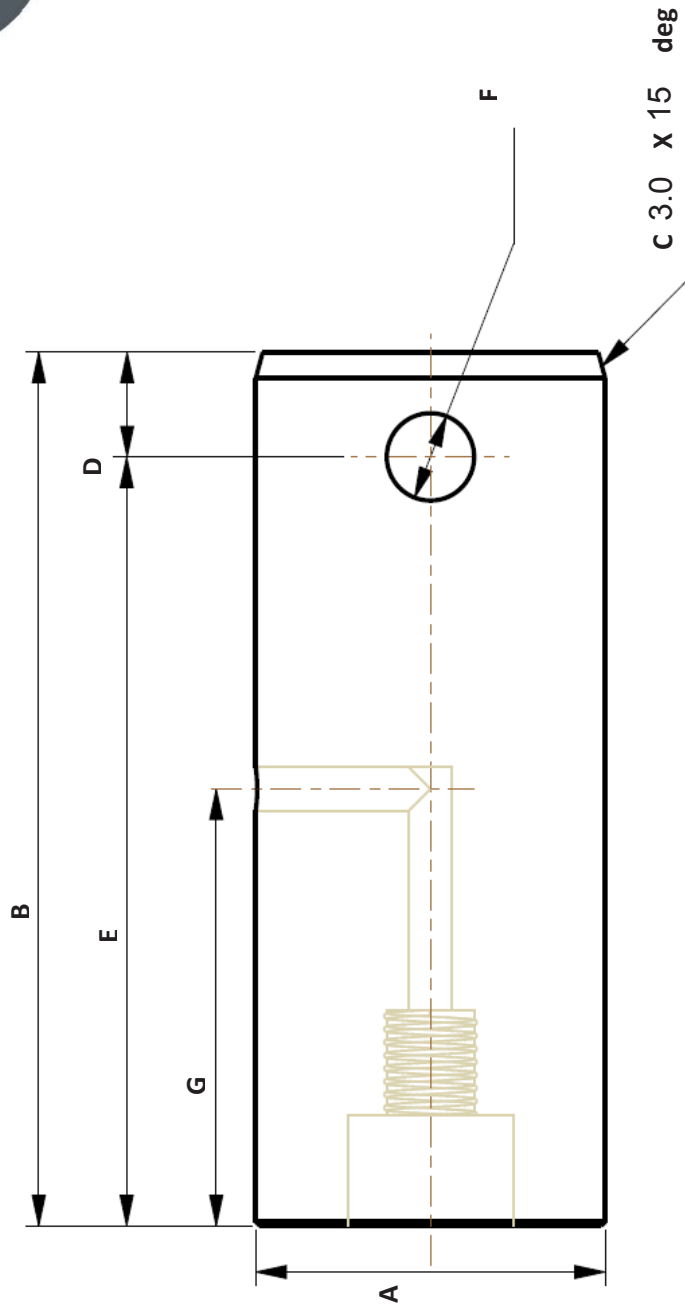
Email: sales@actibush.co.nz

Phone: 09 475 9816

Fax: 09 478 8447



ActiBUSH



Dimension	
A	Diameter
B	Length
C	Leading Edge
D	Leading end of pin to hole centre
E	End of pin to hole center
F	Hole diameter
G	Greaseway length (end of pin to hole centre)
J	End of pin to first outlet
K	First outlet to second outlet

Pin Standard	
Leading edge – 3mm x 15° (default unless defined above)	
Greaseway – 5mm	
Counter-bore – 1/8 BSP	
Undercut for recessed grease nipple – 2.1mm	

Drawing Code:	NBGC	Quantity Required:	
Machine Make/Model:		Customer Order Number:	
Induction Harden:	<input type="checkbox"/>	Customer:	
Other:		Job Number:	

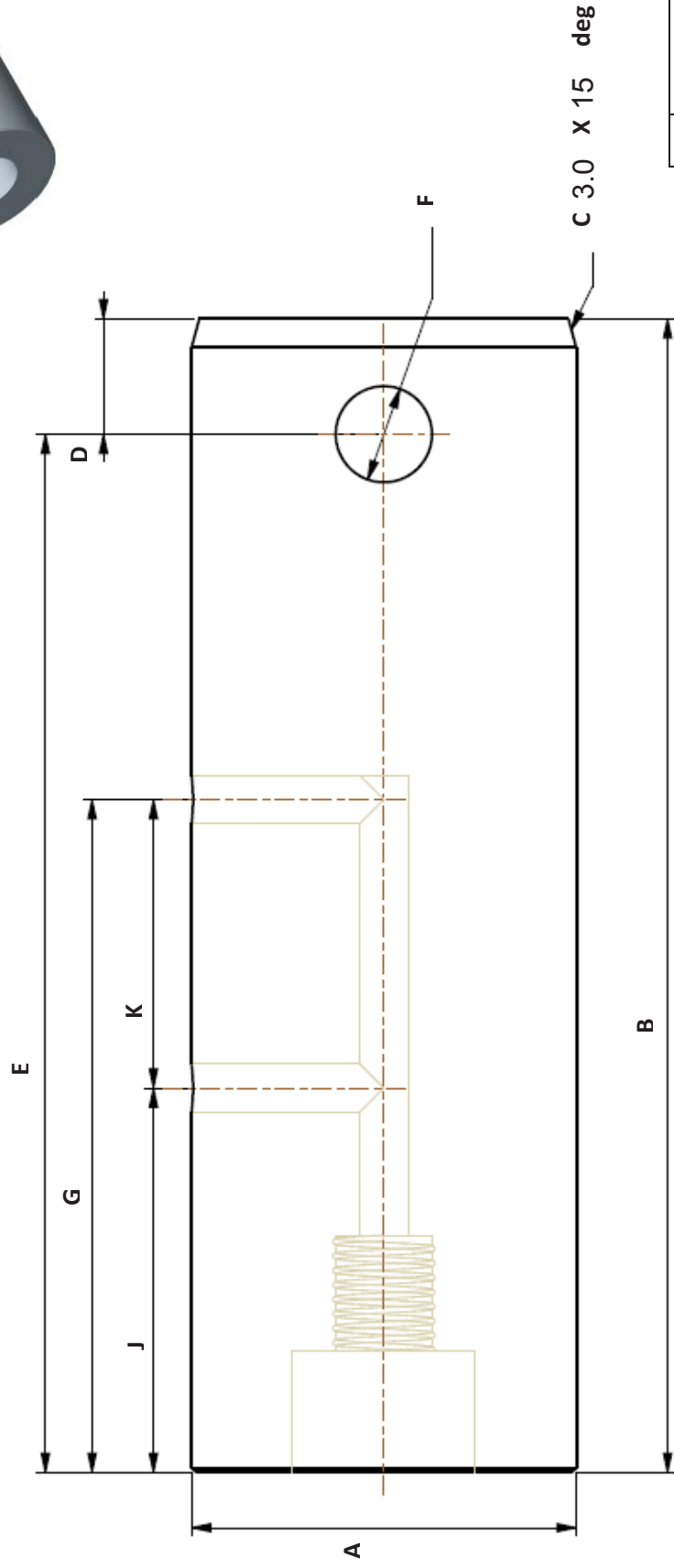
Email: sales@actibush.co.nz

Phone: 09 475 9816

Fax: 09 478 8447



ActiBUSH



Dimension	
A	Diameter
B	Length
C	Leading Edge
D	Leading end of pin to hole centre
E	End of pin to hole center
F	Hole diameter
G	Greaseway length (end of pin to hole centre)
J	End of pin to first outlet
K	First outlet to second outlet

Pin Standard	
Leading edge – 3mm x 15° (default unless defined above)	
Greaseway – 5mm	
Counter-bore – 1/8 BSP	
Undercut for recessed grease nipple – 2.1mm	

Drawing Code:	NBGGC	Quantity Required:	
Machine Make/Model:		Customer Order Number:	
Induction Harden:	<input type="checkbox"/>	Customer:	
Other:		Job Number:	

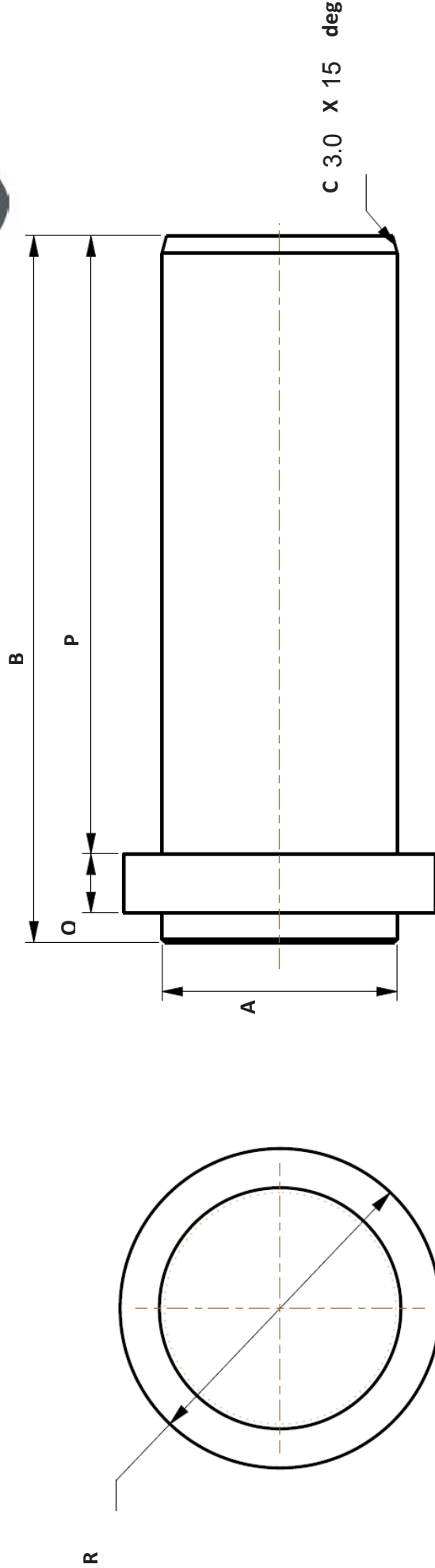
Email: sales@actibush.co.nz

Phone: 09 475 9816

Fax: 09 478 8447



ActiBUSH



Dimension	
A	Diameter
B	Length
C	Leading Edge
D	Leading end of pin to hole centre
E	End of pin to hole center
F	Hole diameter
K	First outlet to second outlet
L	Greaseway length (centre of hole to inside tag face)
M	Inside face of tag to first outlet (centre of outlet)
P	Working area (length) of pin
Q	Tag thickness
R	Outer diameter of tag

Pin Standard	
Leading edge – 3mm x 15° (default unless defined above)	
Greaseway – 5mm	
Counter-bore – 1/8 BSP	
Undercut for recessed grease nipple – 2.1mm	

Drawing Code: OS	Quantity Required:	
Machine Make/Model:	Customer Order Number:	
Induction Harden:	Customer:	
Other:	Job Number:	

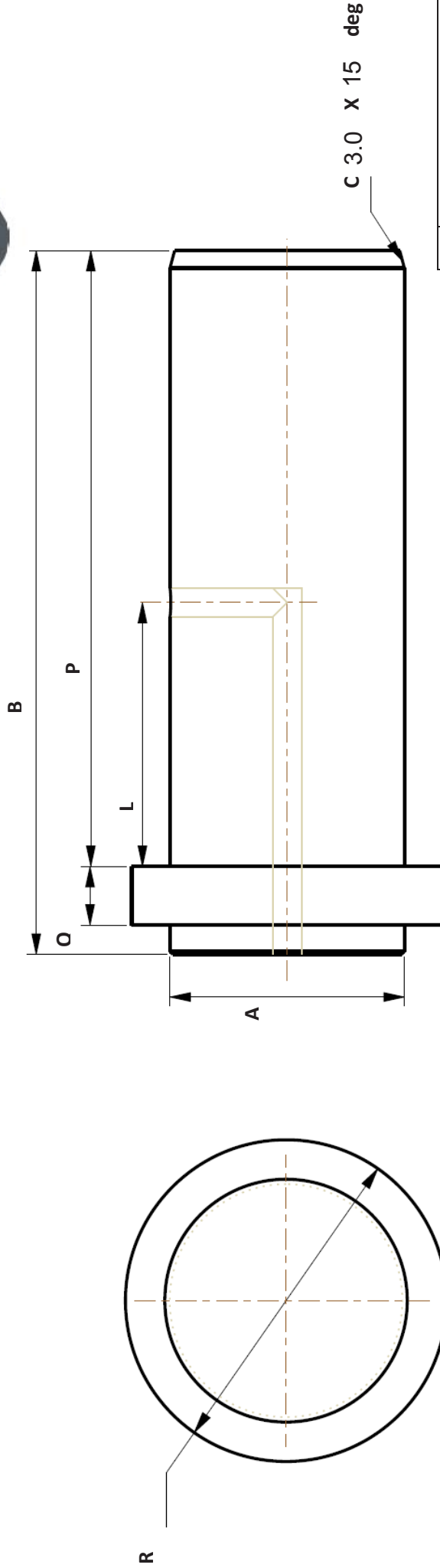
Email: sales@actibush.co.nz

Phone: 09 475 9816

Fax: 09 478 8447



ActiBUSH



Dimension	
A	Diameter
B	Length
C	Leading Edge
D	Leading end of pin to hole centre
E	End of pin to hole centre
F	Hole diameter
K	First outlet to second outlet
L	Greaseway length (centre of hole to inside tag face)
M	Inside face of tag to first outlet (centre of outlet)
P	Working area (length) of pin
Q	Tag thickness
R	Outer diameter of tag

Pin Standard	
Leading edge – 3mm x 15° (default unless defined above)	
Greaseway – 5mm	
Counterbore – 1/8 BSP	
Undercut for recessed grease nipple – 21mm	

Drawing Code:	OSG	Quantity Required:	
Machine Make/Model:		Customer Order Number:	
Induction Harden:	<input type="checkbox"/>	Customer:	
Other:		Job Number:	

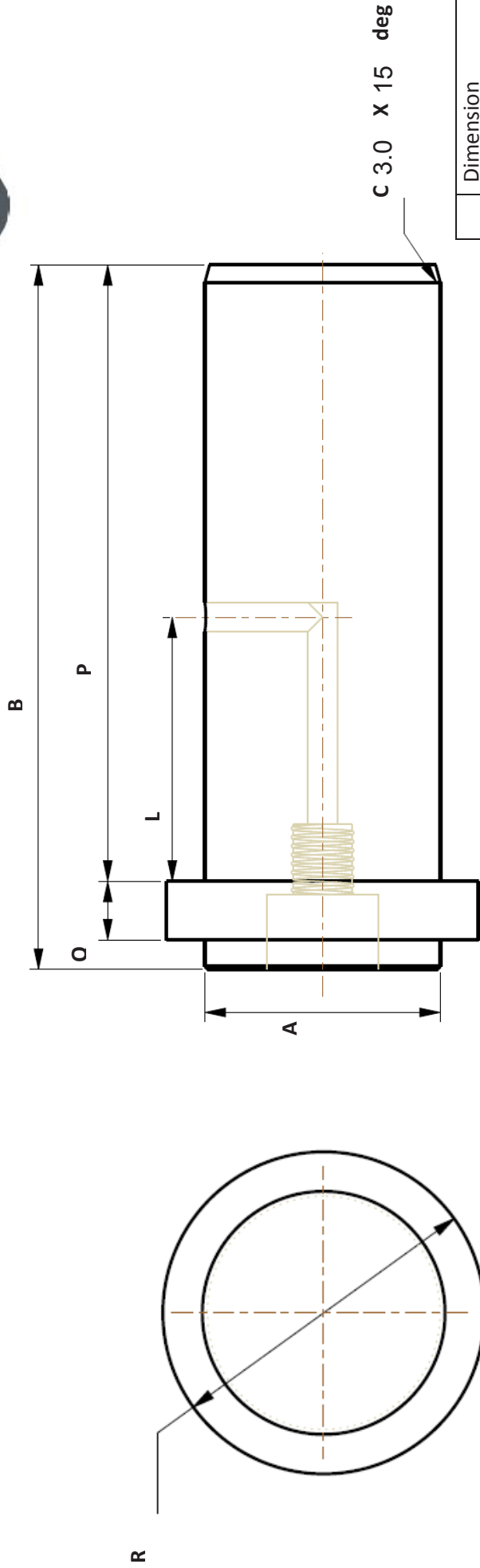
Email: sales@actibush.co.nz

Phone: 09 475 9816

Fax: 09 478 8447



ActiBUSH



Dimension	
A	Diameter
B	Length
C	Leading Edge
D	Leading end of pin to hole centre
E	End of pin to hole centre
F	Hole diameter
K	First outlet to second outlet
L	Greaseway length (centre of hole to inside tag face)
M	Inside face of tag to first outlet (centre of outlet)
P	Working area (length) of pin
Q	Tag thickness
R	Outer diameter of tag

Pin Standard	
Leading edge – 3mm x 15° (default unless defined above)	
Greaseway – 5mm	
Counterbore – 1/8 BSP	
Undercut for recessed grease nipple – 21mm	

Drawing Code: OSGC	Quantity Required:	
Machine Make/Model:	Customer Order Number:	
Induction Harden:	Customer:	
Other:	Job Number:	

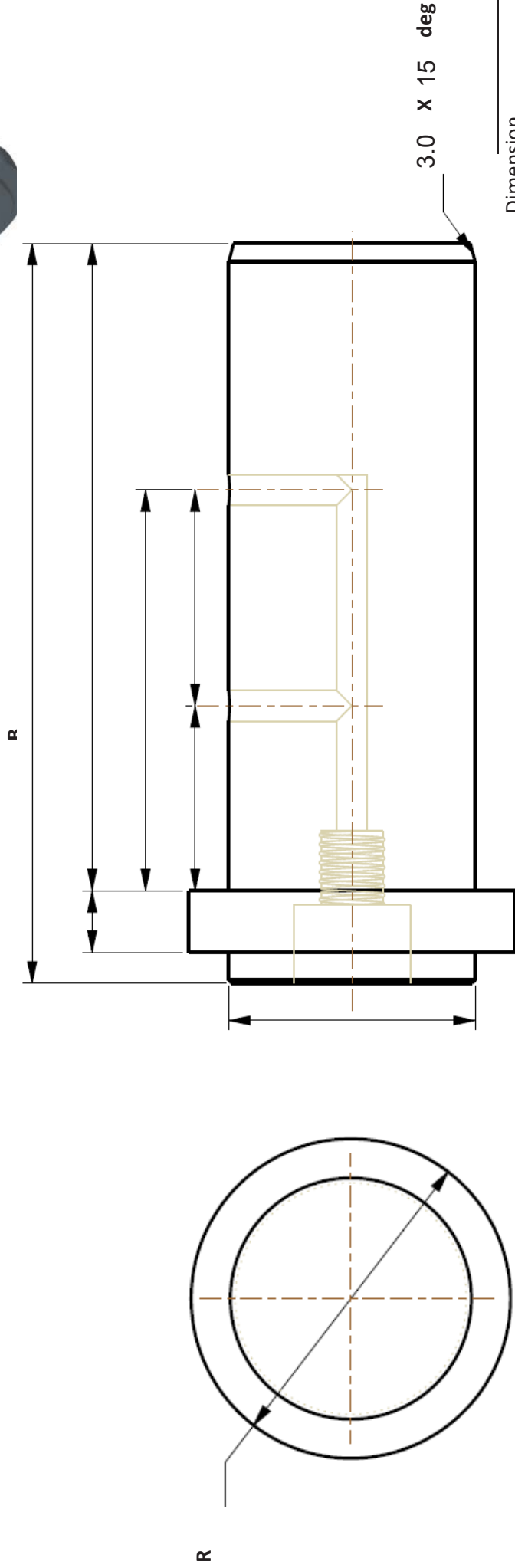
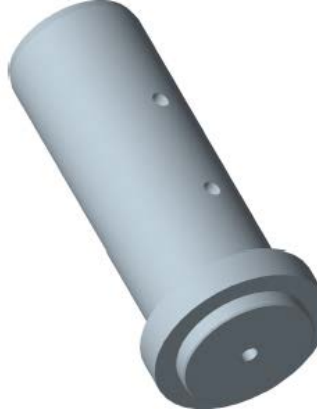
Email: sales@actibush.co.nz

Phone: 09 475 9816

Fax: 09 478 8447



ActiBUSH



Dimension

A	Diameter
B	Length
C	Leading Edge
D	Leading end of pin to hole centre
E	End of pin to hole center
F	Hole diameter
K	First outlet to second outlet
L	Greaseway length (centre of hole to inside tag face)
M	Inside face of tag to first outlet (centre of outlet)
P	Working area (length) of pin
Q	Tag thickness
R	Outer diameter of tag

Pin Standard	
Leading edge – 3mm x 15° (default unless defined above)	
Greaseway – 5mm	
Counter-bore – 1/8 BSP	
Undercut for recessed grease nipple – 2.1mm	

Drawing Code:	OSGGC	Quantity Required:	
Machine Make/Model:		Customer Order Number:	
Induction Harden:	<input type="checkbox"/>	Customer:	
Other:		Job Number:	

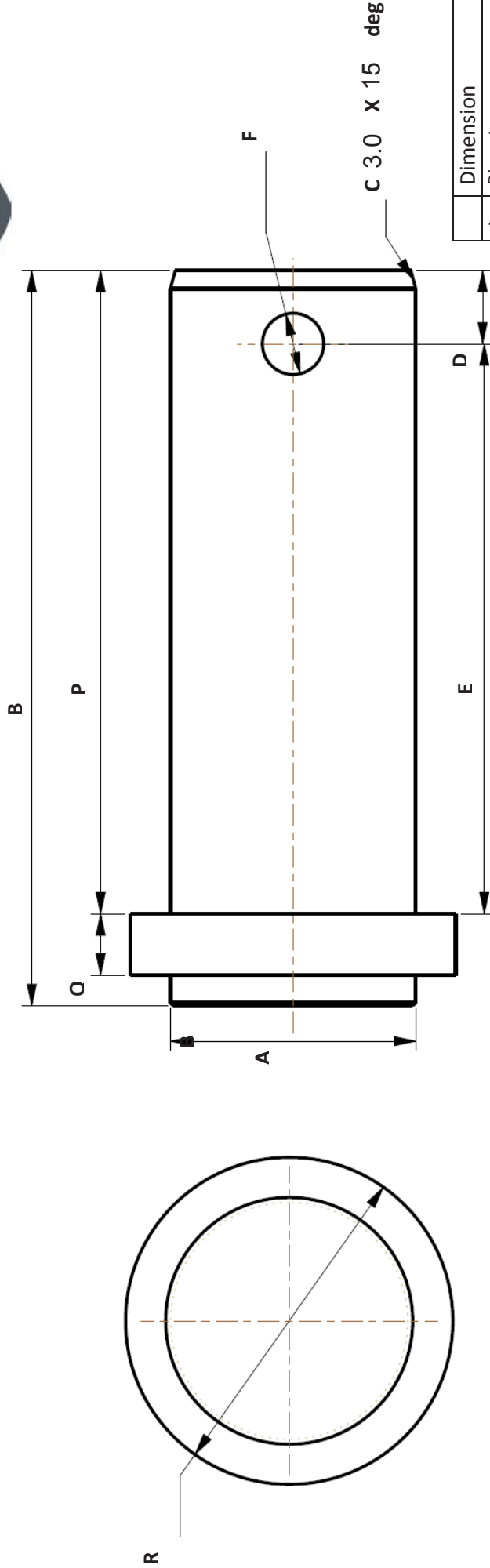
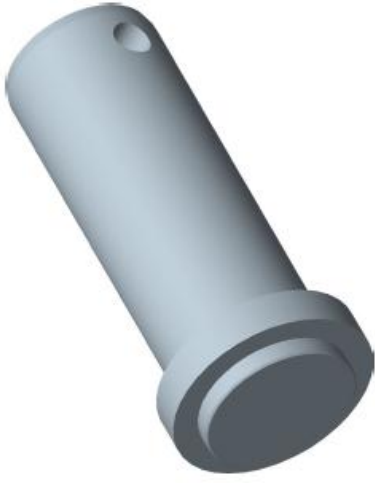
Email: sales@actibush.co.nz

Phone: 09 475 9816

Fax: 09 478 8447



ActiBUSH



Dimension	
A	Diameter
B	Length
C	Leading Edge
D	Leading end of pin to hole centre
E	End of pin to hole center
F	Hole diameter
K	First outlet to second outlet
L	Greaseway length (centre of hole to inside tag face)
M	Inside face of tag to first outlet (centre of outlet)
P	Working area (length) of pin
Q	Tag thickness
R	Outer diameter of tag

Pin Standard	
Leading edge – 3mm x 15° (default unless defined above)	
Greaseway – 5mm	
Counterbore – 1/8 BSP	
Undercut for recessed grease nipple – 2.1mm	

Drawing Code: OSB	Quantity Required:	
Machine Make/Model:	Customer Order Number:	
Induction Harden:	Customer:	
Other:	Job Number:	

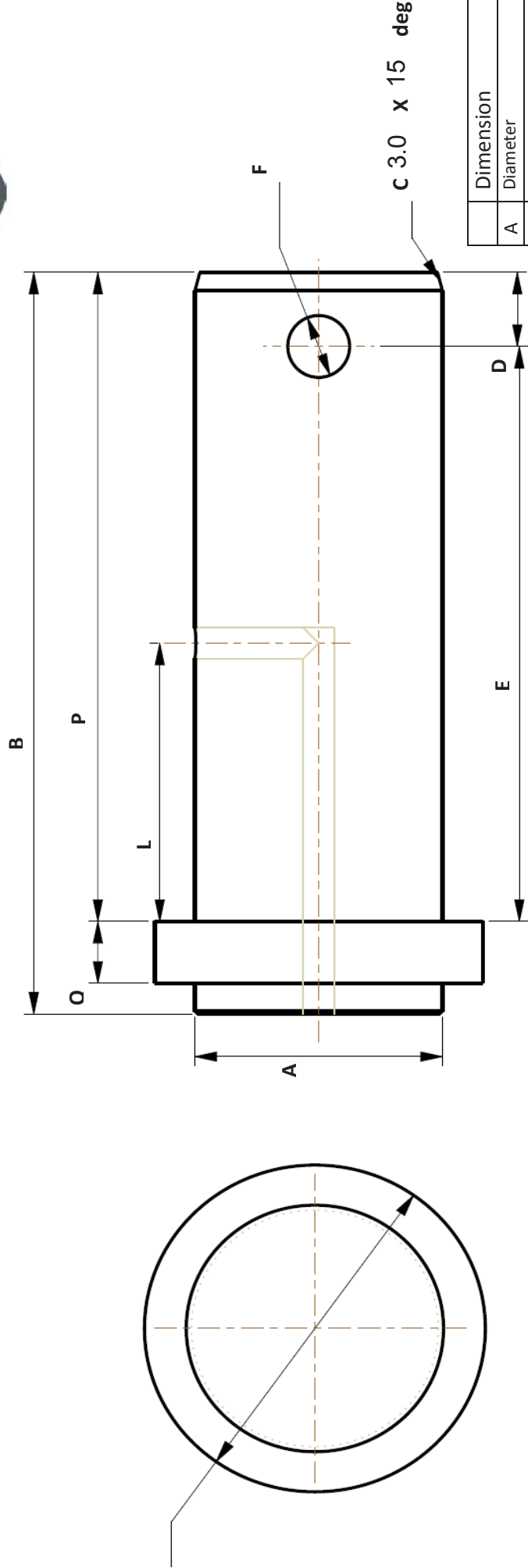
Email: sales@actibush.co.nz

Phone: 09 475 9816

Fax: 09 478 8447



ActiBUSH



Dimension	
A	Diameter
B	Length
C	Leading Edge
D	Leading end of pin to hole centre
E	End of pin to hole center
F	Hole diameter
K	First outlet to second outlet
L	Greaseway length (centre of hole to inside tag face)
M	Inside face of tag to first outlet (centre of outlet)
P	Working area (length) of pin
Q	Tag thickness
R	Outer diameter of tag

Pin Standard	
Leading edge	– 3mm x 15° (default unless defined above)
Greaseway	– 5mm
Counter-bore	– 1/8 BSP
Undercut for recessed grease nipple	– 2.1mm

Drawing Code:	OSBG	Quantity Required:	
Machine Make/Model:		Customer Order Number:	
Induction Harden:	<input type="checkbox"/>	Customer:	
Other:		Job Number:	

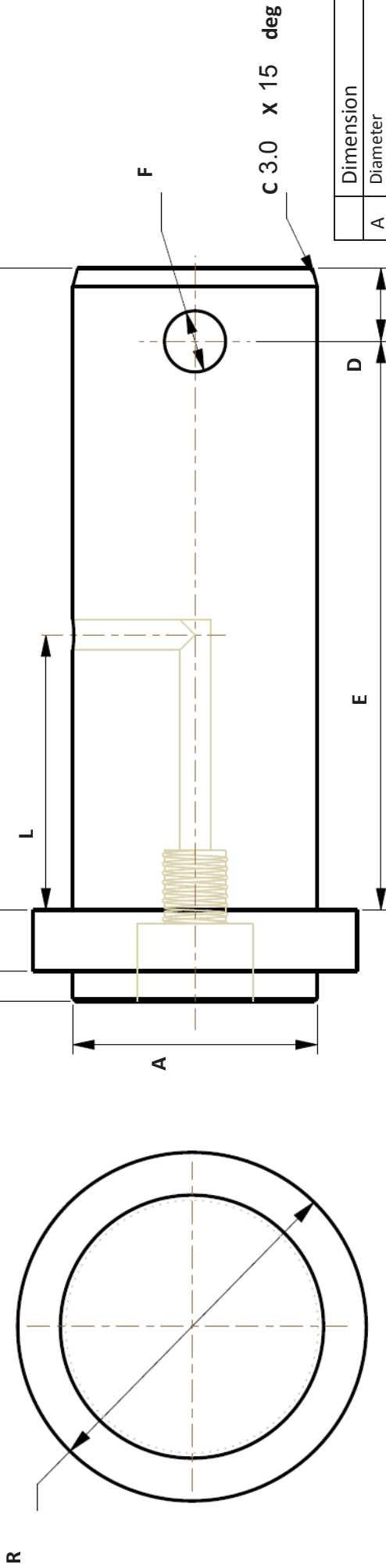
Email: sales@actibush.co.nz

Phone: 09 475 9816

Fax: 09 478 8447



ActiBush



Dimension	
A	Diameter
B	Length
C	Leading Edge
D	Leading end of pin to hole centre
E	End of pin to hole center
F	Hole diameter
K	First outlet to second outlet
L	Greaseway length (centre of hole to inside tag face)
M	Inside face of tag to first outlet (centre of outlet)
P	Working area (length) of pin
Q	Tag thickness
R	Outer diameter of tag

Pin Standard	
Leading edge	– 3mm x 15° (default unless defined above)
Greaseway	– 5mm
Counterbore	– 1/8 BSP
Undercut for recessed grease nipple	– 21mm

Drawing Code:	OSBGC	Quantity Required:	
Machine Make/Model:		Customer Order Number:	
Induction Harden:	<input type="checkbox"/>	Customer:	
Other:		Job Number:	

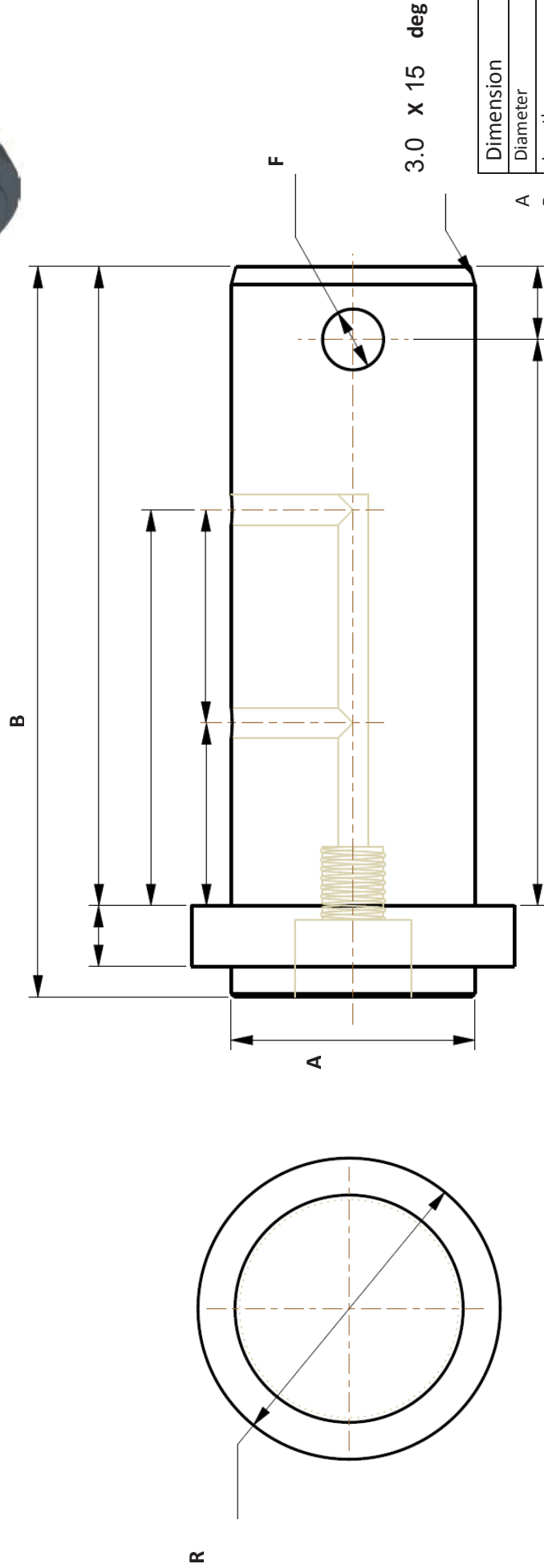
Email: sales@actibush.co.nz

Phone: 09 475 9816

Fax: 09 478 8447



ActiBUSH



Dimension	
A	Diameter
B	Length
C	Leading Edge
D	Leading end of pin to hole centre
E	End of pin to hole center
F	Hole diameter
K	First outlet to second outlet
L	Greaseway length (centre of hole to inside tag face)
M	Inside face of tag to first outlet (centre of outlet)
P	Working area (length) of pin
Q	Tag thickness
R	Outer diameter of tag

Pin Standard	
Leading edge – 3mm x 15° (default unless defined above)	
Greaseway – 5mm	
Counter-bore – 1/8 BSP	
Undercut for recessed grease nipple – 2.1mm	

Drawing Code:	OSBGGC	Quantity Required:	
Machine Make/Model:		Customer Order Number:	
Induction Harden:	<input type="checkbox"/>	Customer:	
Other:		Job Number:	

Email: sales@actibush.co.nz

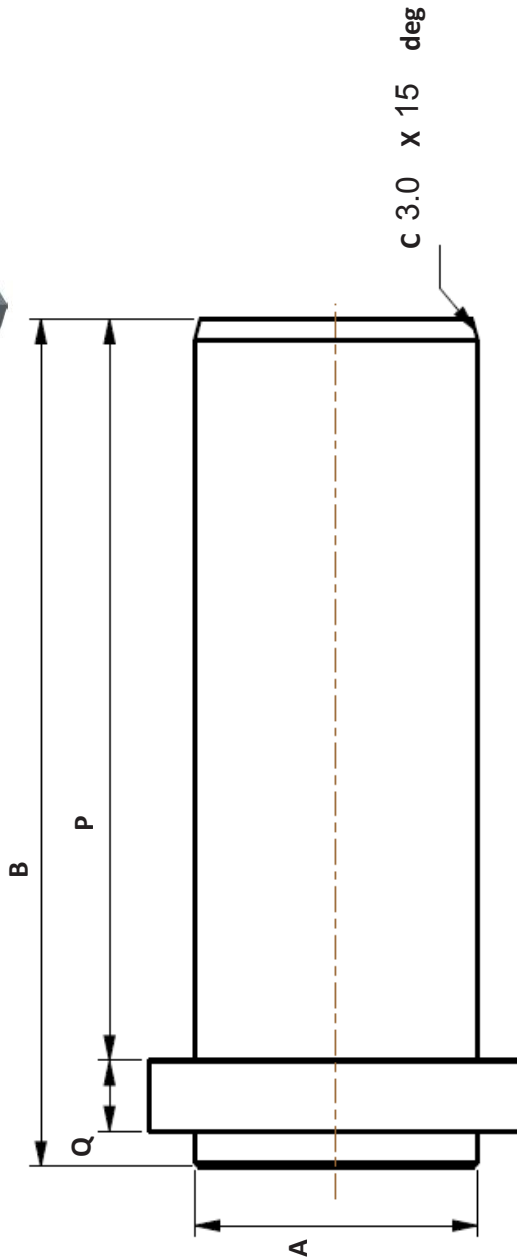
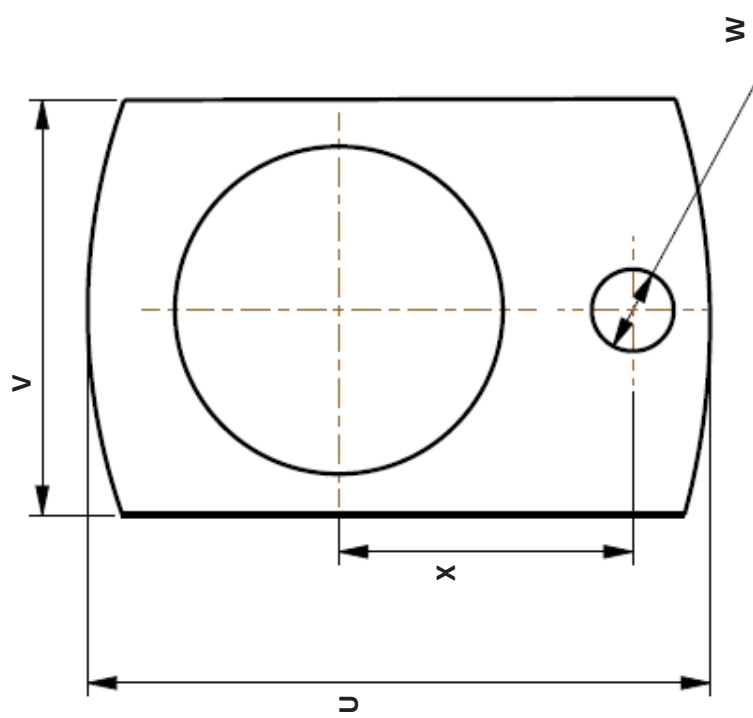
Phone: 09 475 9816

Fax: 09 478 8447



ActiBUSH

Pin Standard
Leading edge – 3mm x 15° (default unless defined above)
Greaseway – 5mm
Counterbore – 1/8 BSP
Undercut for recessed grease nipple – 21mm



Drawing Code:	RS	Quantity Required:	
Machine Make/Model:		Customer Order Number:	
Induction Harden:	<input type="checkbox"/>	Customer:	
Other:		Job Number:	

Dimension			
A	Diameter	M	Inside face of tag to first outlet (centre of outlet)
B	Length	P	Working area (length) of pin
C	Leading Edge	Q	Tag thickness
D	Leading end of pin to hole centre	U	Length of tag
E	End of pin to hole centre	V	Width of tag
F	Hole diameter	W	Hole Diameter
K	First outlet to second outlet	X	Hole centre to hole centre
L	Greaseway length (centre of hole to inside tag face)		

Email: sales@actibush.co.nz

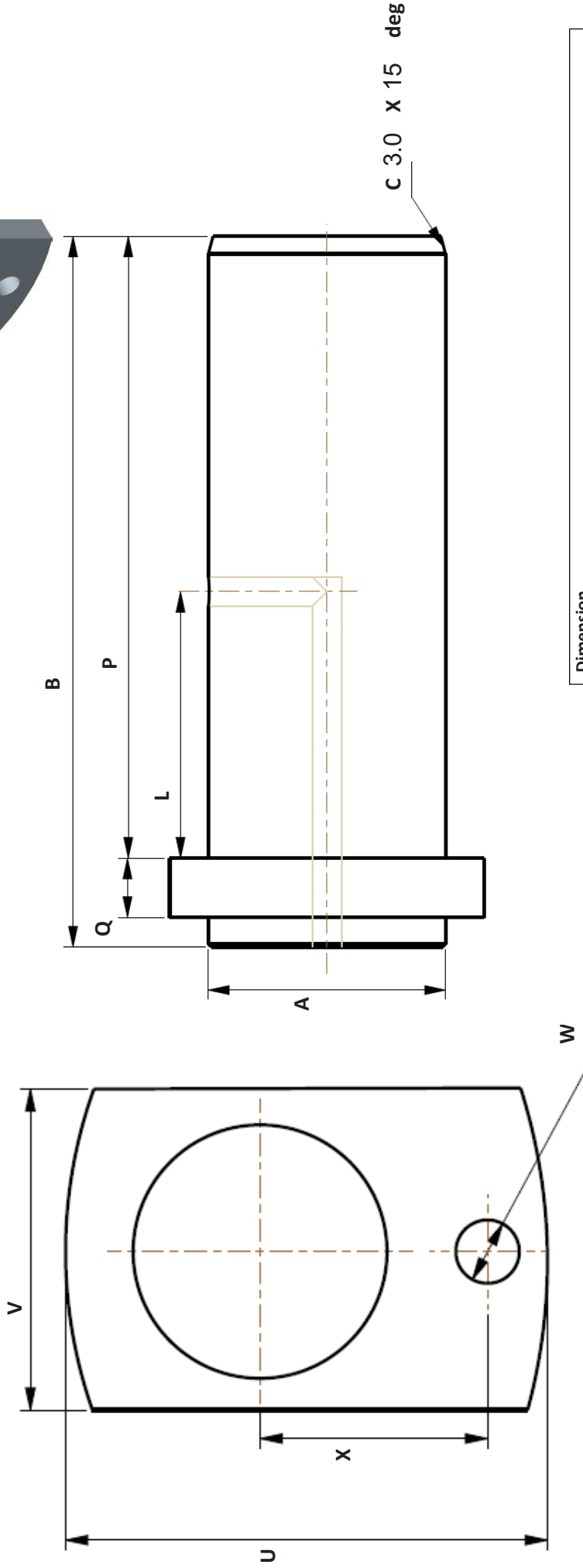
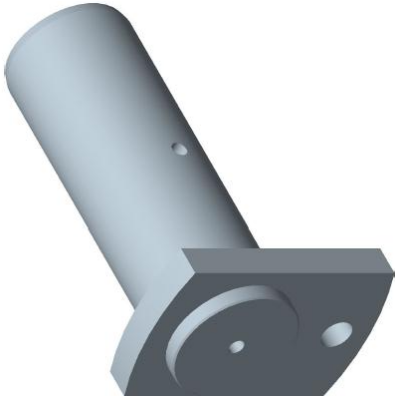
Phone: 09 475 9816

Fax: 09 478 8447



ActiBush

Pin Standard
Leading edge – 3mm x 15° (default unless defined above)
Greaseway – 5mm
Counterbore – 1/8 BSP
Undercut for recessed grease nipple – 2.1mm



Dimension			
A	Diameter	M	Inside face of tag to first outlet (centre of outlet)
B	Length	P	Working area (length) of pin
C	Leading Edge	Q	Tag thickness
D	Leading end of pin to hole centre	U	Length of tag
E	End of pin to hole center	V	Width of tag
F	Hole diameter	W	Hole Diameter
K	First outlet to second outlet	X	Hole centre to hole centre
L	Greaseway length (centre of hole to inside tag face)		

Drawing Code:	RSG	Quantity Required:	
Machine Make/Model:		Customer Order Number:	
Induction Harden:	<input type="checkbox"/>	Customer:	
Other:		Job Number:	

Email: sales@actibush.co.nz

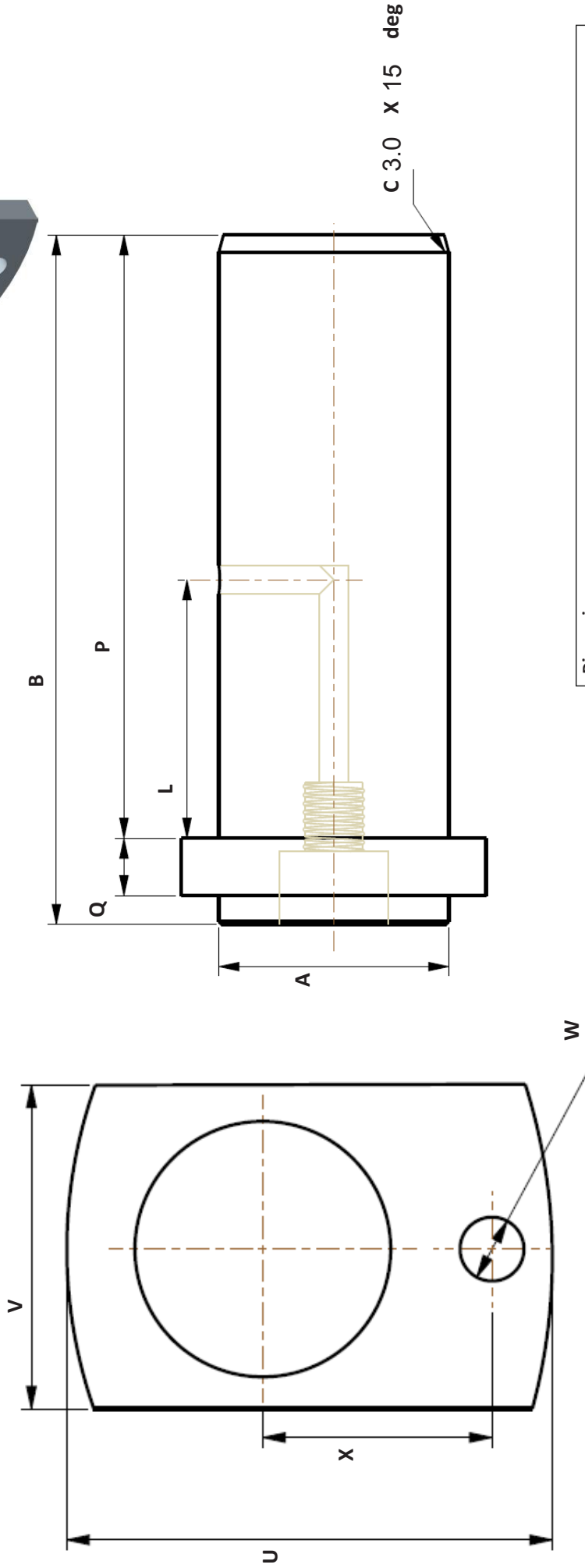
Phone: 09 475 9816

Fax: 09 478 8447



ActiBUSH

Pin Standard
Leading edge – 3mm x 15° (default unless defined above)
Greaseway – 5mm
Counterbore – 1/8 BSP
Undercut for recessed grease nipple – 2.1mm



Dimension			
A	Diameter	M	Inside face of tag to first outlet (centre of outlet)
B	Length	P	Working area (length) of pin
C	Leading Edge	Q	Tag thickness
D	Leading end of pin to hole centre	U	Length of tag
E	End of pin to hole center	V	Width of tag
F	Hole diameter	W	Hole Diameter
K	First outlet to second outlet	X	Hole centre to hole centre
L	Greaseway length (centre of hole to inside tag face)		

Drawing Code:	RSGC	Quantity Required:	
Machine Make/Model:		Customer Order Number:	
Induction Harden:	<input type="checkbox"/>	Customer:	
Other:		Job Number:	

Email: sales@actibush.co.nz

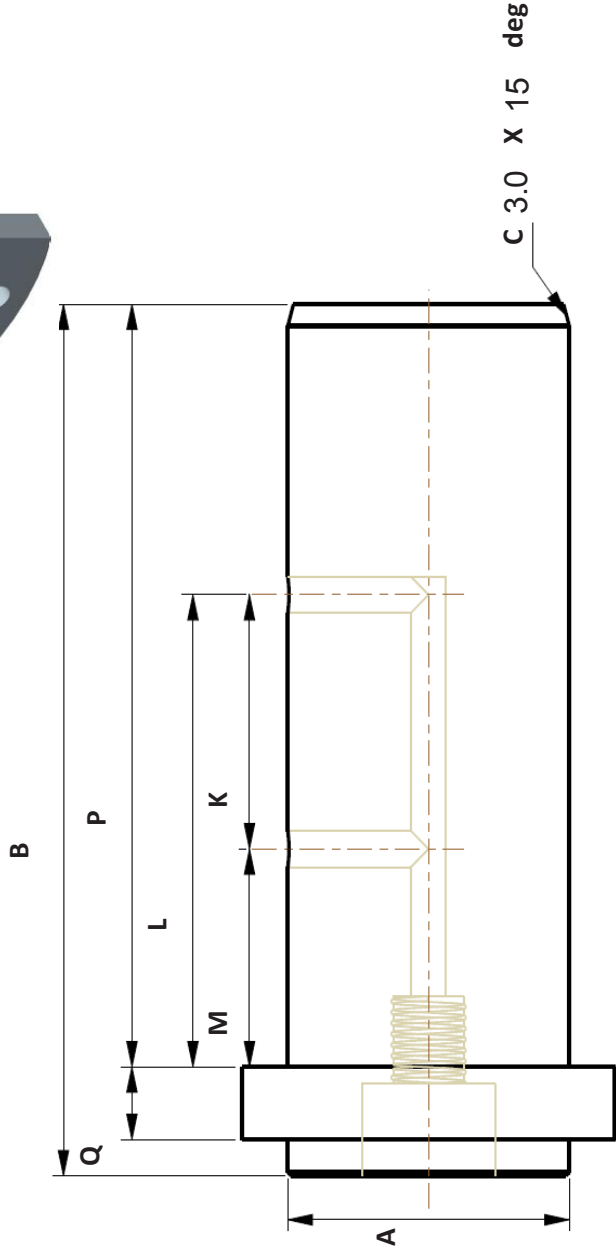
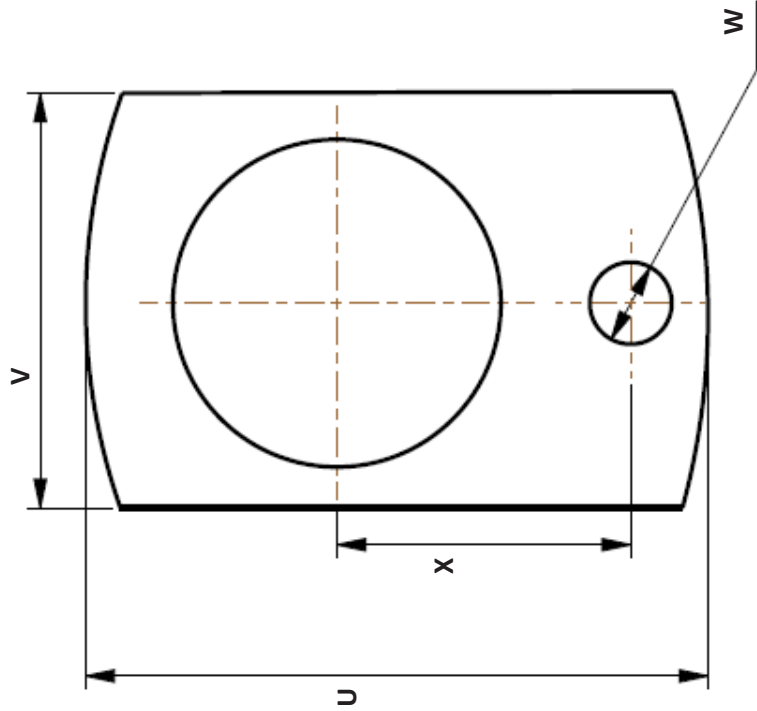
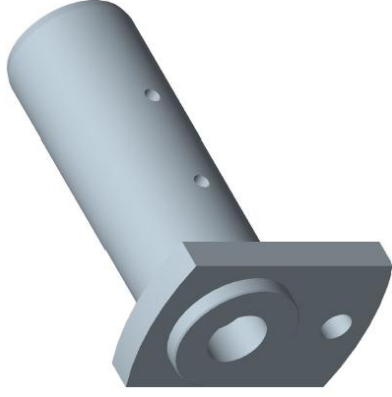
Phone: 09 475 9816

Fax: 09 478 8447



ActiBUSH

Pin Standard
Leading edge – 3mm x 15° (default unless defined above)
Greaseway – 5mm
Counterbore – 1/8 BSP
Undercut for recessed grease nipple – 2.1mm



Dimension	
A	Diameter
B	Length
C	Leading Edge
D	Leading end of pin to hole centre
E	End of pin to hole center
F	Hole diameter
K	First outlet to second outlet
L	Greaseway length (centre of hole to inside tag face)
M	Inside face of tag to first outlet (centre of outlet)
P	Working area (length) of pin
Q	Tag thickness
U	Length of tag
V	Width of tag
W	Hole Diameter
X	Hole centre to hole centre

Drawing Code:	RSGGC	Quantity Required:	
Machine Make/Model:		Customer Order Number:	
Induction Harden:	<input type="checkbox"/>	Customer:	
Other:		Job Number:	

Email: sales@actibush.co.nz

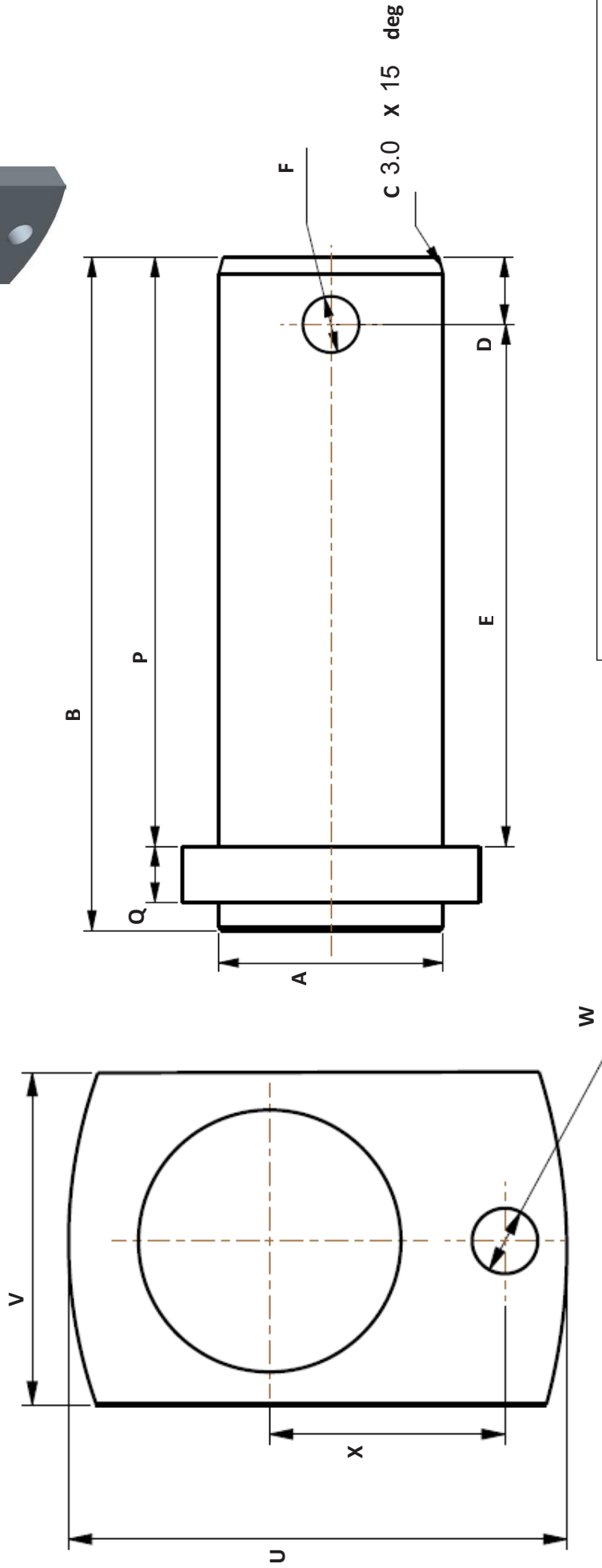
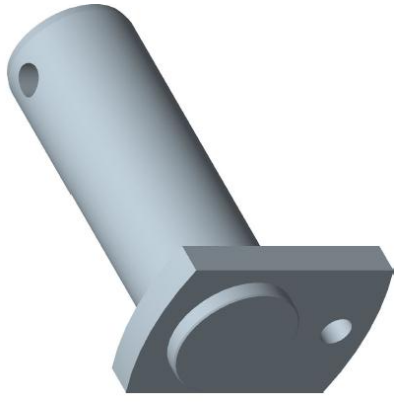
Phone: 09 475 9816

Fax: 09 478 8447



ActiBUSH

Pin Standard
Leading edge – 3mm x 15° (default unless defined above)
Greaseway – 5mm
Counterbore – 1/8 BSP
Undercut for recessed grease nipple – 2.1mm



Dimension			
A	Diameter	M	Inside face of tag to first outlet (centre of outlet)
B	Length	P	Working area (length) of pin
C	Leading Edge	Q	Tag thickness
D	Leading end of pin to hole centre	U	Length of tag
E	End of pin to hole center	V	Width of tag
F	Hole diameter	W	Hole Diameter
K	First outlet to second outlet	X	Hole centre to hole centre
L	Greaseway length (centre of hole to inside tag face)		

Drawing Code: RSB	Quantity Required:
Machine Make/Model:	Customer Order Number:
Induction Harden: <input type="checkbox"/>	Customer:
Other:	Job Number:

Email: sales@actibush.co.nz

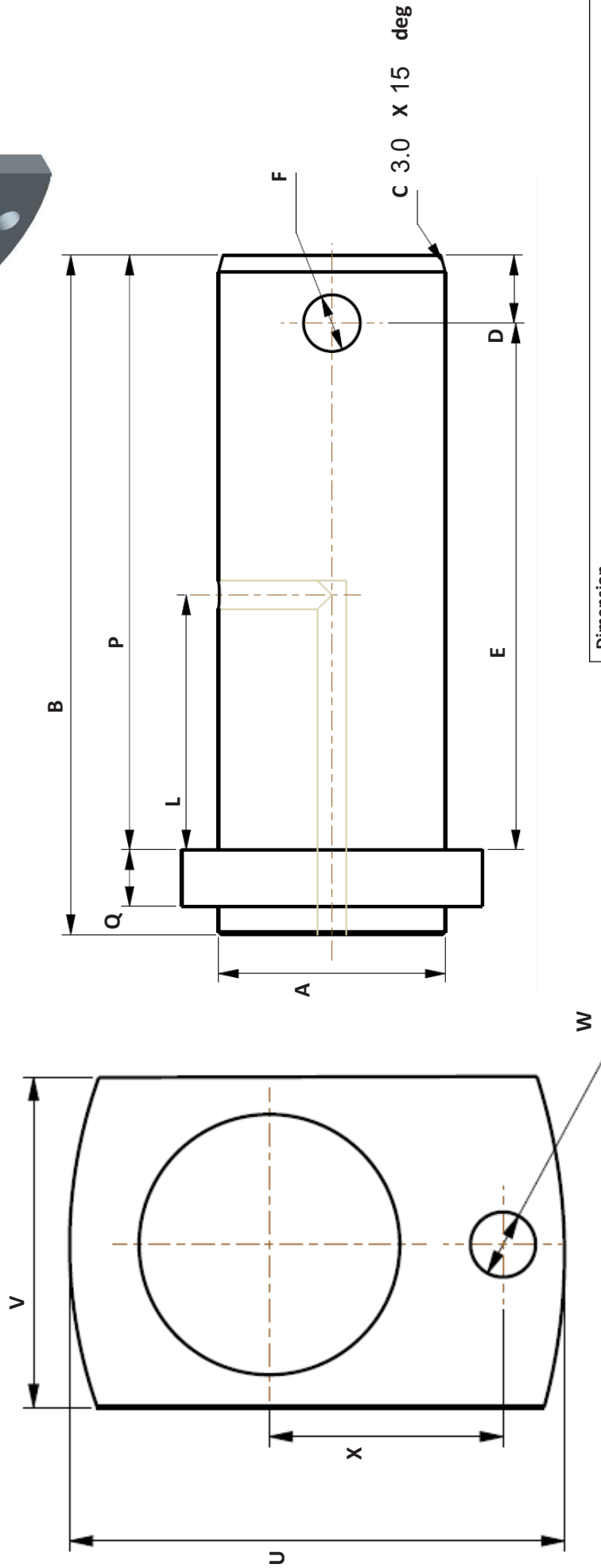
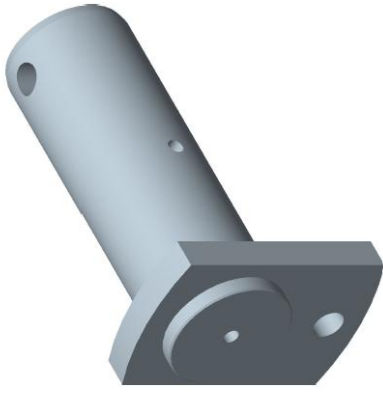
Phone: 09 475 9816

Fax: 09 478 8447



ActiBUSH

Pin Standard
Leading edge – 3mm x 15° (default unless defined above)
Greaseway – 5mm
Counterbore – 1/8 BSP
Undercut for recessed grease nipple – 2.1mm



Dimension				
A	Diameter	M	Inside face of tag to first outlet (centre of outlet)	
B	Length	P	Working area (length) of pin	
C	Leading Edge	Q	Tag thickness	
D	Leading end of pin to hole centre	U	Length of tag	
E	End of pin to hole center	V	Width of tag	
F	Hole diameter	W	Hole Diameter	
K	First outlet to second outlet	X	Hole centre to hole centre	
L	Greaseway length (centre of hole to inside tag face)			

Drawing Code:	RSBG	Quantity Required:	
Machine Make/Model:		Customer Order Number:	
Induction Harden:	<input type="checkbox"/>	Customer:	
Other:		Job Number:	

Email: sales@actibush.co.nz

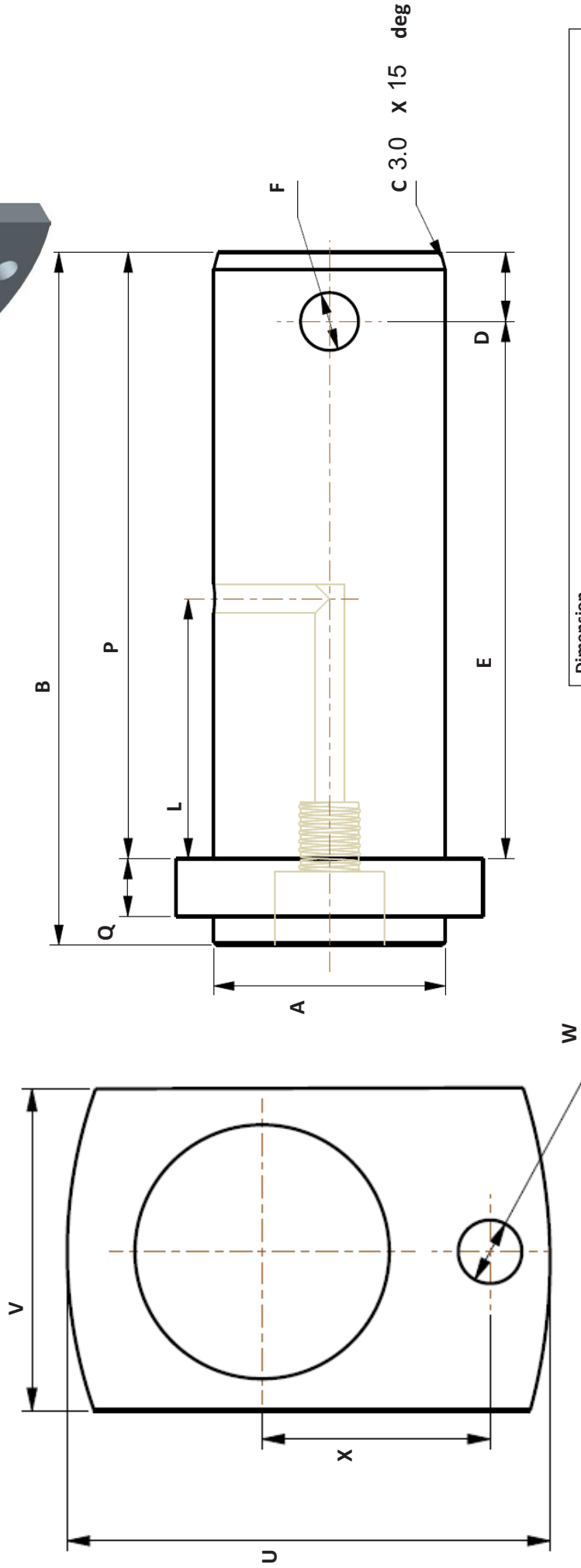
Phone: 09 475 9816

Fax: 09 478 8447



ActiBush

Pin Standard
Leading edge – 3mm x 15° (default unless defined above)
Greaseway – 5mm
Counterbore – 1/8 BSP
Undercut for recessed grease nipple – 21mm



Dimension	
A	Diameter
B	Length
C	Leading Edge
D	Leading end of pin to hole centre
E	End of pin to hole center
F	Hole diameter
K	First outlet to second outlet
L	Greaseway length (centre of hole to inside tag face)
M	Inside face of tag to first outlet (centre of outlet)
P	Working area (length) of pin
Q	Tag thickness
U	Length of tag
V	Width of tag
W	Hole Diameter
X	Hole centre to hole centre

Drawing Code:	RSBGC	Quantity Required:
Machine Make/Model:		Customer Order Number:
Induction Harden:	<input type="checkbox"/>	Customer:
Other:		Job Number:

Email: sales@actibush.co.nz

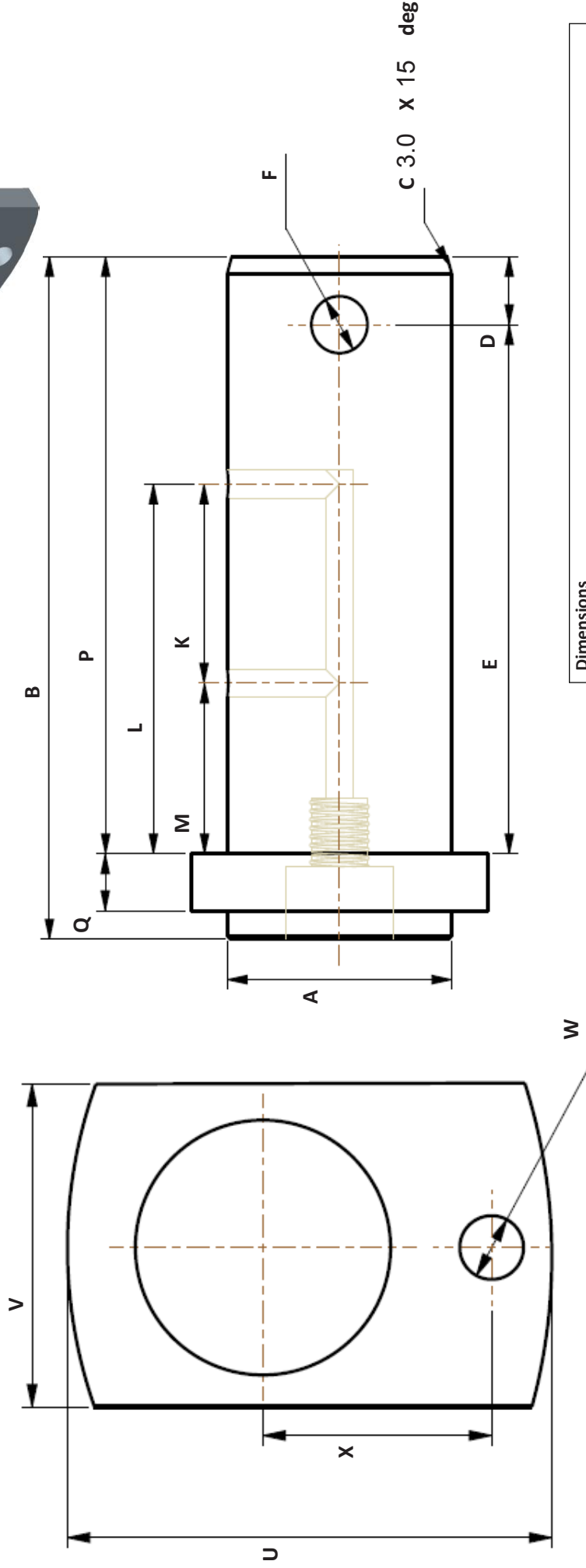
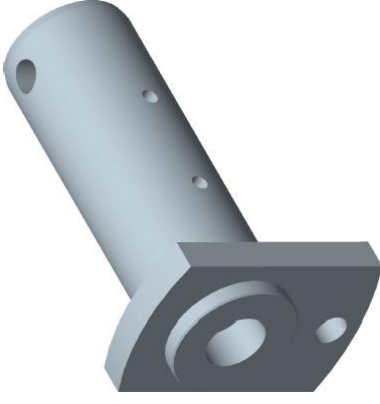
Phone: 09 475 9816

Fax: 09 478 8447



ActiBUSH

Pin Standard
Leading edge – 3mm x 15° (default unless defined above)
Greaseway – 5mm
Counterbore – 1/8 BSP
Undercut for recessed grease nipple – 21mm



Dimensions	
A	Diameter
B	Length
C	Leading Edge
D	Leading end of pin to hole centre
E	End of pin to hole center
F	Hole diameter
K	First outlet to second outlet
L	Greaseway length (centre of hole to inside tag face)
M	Inside face of tag to first outlet (centre of outlet)
P	Working area (length) of pin
Q	Tag thickness
U	Length of tag
V	Width of tag
W	Hole Diameter
X	Hole centre to hole centre

Drawing Code:	RSBGGC	Quantity Required:	
Machine Make/Model:		Customer Order Number:	
Induction Harden:	<input type="checkbox"/>	Customer:	
Other:		Job Number:	